

-65466 909873

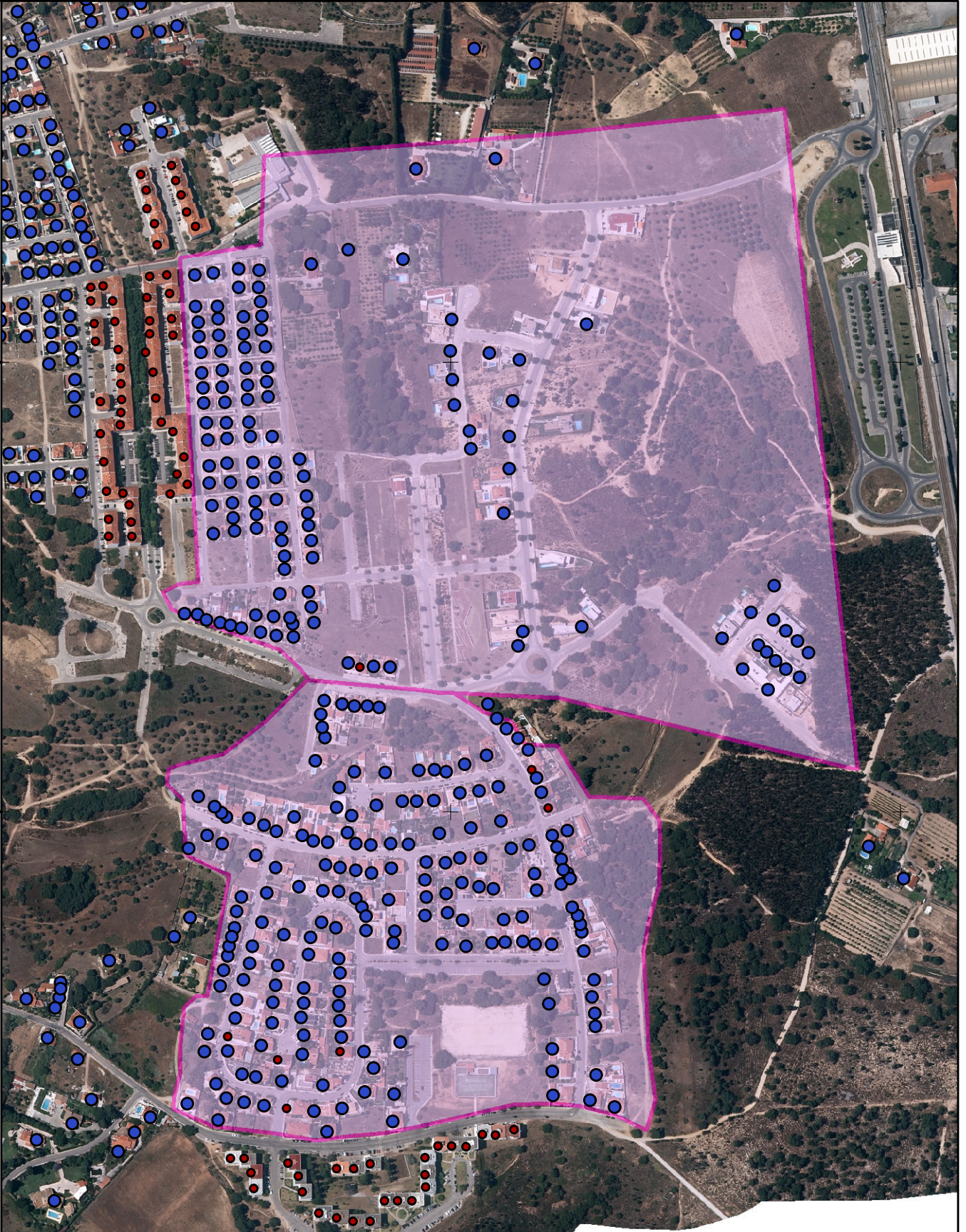
-64966 909873

-64466 909873

-121620 614809

-122120 614809

-122620 614809






Sistema de coordenadas nacional: PT-TM06/ETRS89 (European Terrestrial Reference System 1989) - Elipsóide de referência: GRS80 - Projeção cartográfica: Transversa de Mercator

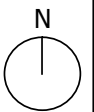
Município  
**Palmela**  
Câmara Municipal

Data: 07-02-2022

### Remoção porta-a-porta de RU de contentores de 120 litros em Aires/Padre Nabeto

 Área de recolha porta a porta em Aires, Padre Nabeto

Base Geográfica Edifícios 2011  
 mais do que 1 alojamento  
 1 alojamento



Escala:  
1:6.000